

LMergo

LM

feel the
difference



High-quality dental instruments
for veterinary dentistry

Your skills are worth LM

High-quality dental instruments for veterinary dentistry

Like every true professional we also aim for the ultimate perfection in our work. LM-Dental devotes its entire product development and production process to achieve the best possible quality in all our products for you to have the very best tools to work with. We deliver the highest of quality to guarantee your success in the treatment results.

We are now proud to present a specified line of dental instruments to meet the needs of the veterinarian dentistry.

Pioneer in instrument ergonomics

Since the company was founded in 1973, LM-Dental has been passionate about improving the ergonomics of the hand instruments and making the daily work of clinicians less strenuous and more convenient.

How to define the ergonomics of a hand instrument? Firstly a non-slip and natural grip on an instrument with a lightweight and optimal design are essential. Easy handling of the instrument guarantees the best clinical result. Reliability, wear resistance and comfort are evident for the clinician.



LM-Dental is the market leader in Northern Europe and has distribution in over 50 countries. All our products are produced in Scandinavia. We give our high-tech products a handmade finish to gain a top-quality end result and highest functionality.

For more information please visit www.lm-dental.com/vet or contact your local LM distributor.

LM instrument features and benefits

LM-DuraGradeMAX
supersteel

Strong and sharp
cutting edges
High metal wear
resistance

Ergonomic design

Comfortable to hold

Elastic silicone coating

Light, non-slip grip

Well-balanced

Controlled grip

Tight seam at blade
juncture

Easy to keep clean

Lightweight

Less strain on the
hands

Clear color-coding

Easy identification



Test & measure

Explorer probes are diagnostic combination instruments for detecting calculus, cavities and abnormalities on the tooth surface as well as measuring the pocket depths. Color coded markings on the probes indicate the depth/measure in millimeters of the periodontal pocket. Ball end does not harm gum tissue or damage pocket bottom.



Mirror handle
LM 25 XSI VET

2 mm scale
ball end

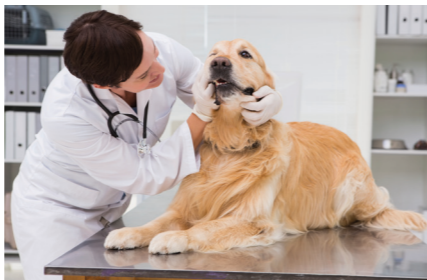


Explorer - Probe 2
LM 23-520B XSI VET

3 mm scale
ball end



Explorer - Probe 3
LM 23-530B XSI VET



Mirrors are sold separately.
Standard thread M2.5.

Mirror front surface
1 pc, product code 10P1
12 pcs, product code 10P12

Remove calculus

Scalers are used for the removal of heavy supragingival (above the gum line) calculus.



Scaler small - Universal
LM 301-302 XSI VET



Scaler small - Posterior
LM 311-312 XSI VET



Scaler - Posterior
LM 322-323 XSI VET



Scaler - Anterior
LM 145-150 XSI VET

Universal curettes are used for the removal of moderate calculus. Can be used also subgingivally (below the gum line).



Universal
LM 215-216 XSI VET



Universal - Small
LM 215-216M XSI VET



Universal - Anterior
LM 268M-269 XSI VET



Area specific curettes are used for all types of calculus removal. These curettes have only one cutting edge creating a “safe-side” enabling carefree deep periodontal cleaning.



Curette small - Anterior
LM 201-202 XSI VET



Curette small - Mesial
LM 211-212 XSI VET



Curette small - Distal
LM 213-214 XSI VET



Curette - Anterior
LM 201-202R XSI VET



Curette - Mesial
LM 211-212R XSI VET



Curette - Distal
LM 213-214R XSI VET

Protect & organize

The easy-to-use cassettes protect and organize your dental hand instruments. In cassettes the instruments are locked securely but rotating freely for cleaning prolonging the life span of the instruments.

LM-Servo 5

Cassette for 5 hand instruments
(180 x 86 x 28 mm)
LM 6650



LM-Servo 8

Cassette for 8 hand instruments
(180 x 136 x 28 mm)
LM 6680



Cassette

for extracting instrument
LM 810001 VET



Hand instrument sets by veterinary dental experts

Pick your own favourites to your hand instrument cassette or try these recommendations:

Set for cats and small dogs

Mirror
Explorer - Probe 2
Scaler small - Universal
Scaler - Anterior
Universal -Small



Set for dogs

Mirror
Explorer - Probe 2
Scaler small - Posterior
Scaler - Anterior
Universal

Extract gently

In order to enable rapid healing the tooth extraction needs to be done as atraumatically as possible without causing damage to the gingival tissue. LM extraction instruments are comfortable to hold and easy to rotate. The secure LM-ErgoTouch surface provides a good, non-slip grip.

Use **luxating instruments** for gentle tooth removal. The thin tip of the instrument is introduced into the periodontal space and slowly advanced toward the apex of the root while twisting the instrument gently back and forth.



Luxating instruments are available in four different blade sizes.



Luxating 2
LM 812220 VET

Luxating 3
LM 812230 VET

Luxating 4
LM 812240 VET

Luxating 5
LM 812250 VET

Do not use the luxating instruments as an elevator.



Root luxating instrument is designed for delicate root teasing procedures.



Root Luxating
LM 812210 VET

Extract

Elevators work best when more force and torque are needed.

Elevating instruments are available in three different blade sizes.



Elevator 3
LM 814230 VET



Elevator 4
LM 814240 VET



Elevator 5
LM 814250 VET

Sharpening stone
for extracting instrument
LM 818002



Extracting instruments are supplied in convenient cassette that protects both the instrument and the handler. The cassettes can be ordered also separately. See page 7.



LM-Ergo



Remove calculus by using ultrasonics

Piezo-electric technology

Ultimate power with a delicate touch

LM-DuraGradeMAX super steel tips

High metal wear resistance

Clear control board

Easy-to-use

Dynamic foot pedal for light control and power adjustment

Leaves hands free for patient treatment

Optimised LED lights

Superior visibility

Ergonomic handpieces

Comfortable, non-slip grip

Exchangeable LM-ErgoGrips

Easy to keep clean

LM-ErgoVet UltraLED is the ultimate tool for ultrasonic treatment. It's available also as built-in version for integration to your dental unit.

UltraLED table-top device

- with tap water connector LM 100741 V
- with liquid dispenser LM 100751 V

Includes 3 scaler tips (PE-31, -32, -39), 3 Focus LED LM-ErgoGrips and 3 torque tip wrenches.



Ultra / UltraLED built-in kits

Available with three alternative handpieces

- Ultra Standard
- UltraLED Standard with light
- detachable and autoclavable UltraLED with light

Kit includes handpiece and tubing, electronic unit, 3 scaler tips (PE-31, -32 and -39), 3 LM-ErgoGrips and 3 torque tip wrenches.

Tips and accessories

LM ultrasonic tips are made of highly durable steel offering high wear resistance.

Optimum working power mode is marked on the tips with a symbol corresponding the one on the device control board.

Scaling tips for removal of supragingival heavy calculus.



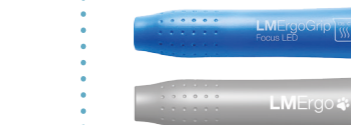
PE-31
LM 100131 V



PE-32
LM 100132 V



PE-39
LM 100139 V



LM-ErgoGrip Focus LED

for handpieces with light
- blue LM 10099B V
- light grey LM 10099G V

LM-ErgoGrip Ultra

for Ultra Standard handpiece
- blue LM 10095B V
- light grey LM 10095G V

Universal tip for calculus removal.



PE-38
LM 100138 V

Tip for subgingival calculus removal.



PE-41PS
LM 100141PS V

Tip for subgingival calculus removal. Good for small pets.



PE-40H
LM 100140H V



We are looking for
new partners to be
our veterinary dental
instrument distributors.

Interested?

Please contact us for
more information!



LM Dental

LM-Instruments Oy
Norrbym rantatie 8 | FI-21600 Parainen | Finland
Tel. +358 2 4546 400
info@lm-dental.com | www.lm-dental.com



For more information go to www.lm-dental.com/vet
or contact your local LM distributor