

REINFORCED COMPOSITE BLOC FOR PERMANENT RESTORATION

BRILLIANT Crios

High performance – made brilliant



Ceramics – a smart solution
in the kitchen.

Composite – a BRILLIANT solution
in the practice.



BRILLIANT Crios

Reinforced composite bloc for permanent restorations

Composite has long been the gold standard in direct filling therapy. With BRILLIANT Crios, the well-proven dental material now enters indirect CAD/CAM restoration technology. Compared to ceramics, the CAD/CAM bloc for permanent restorations, which is entirely made of composite, offers considerable advantages.

BRILLIANT CRIOS FOR PERMANENT AESTHETIC RESTORATIONS

REINFORCED COMPOSITE

- High flexural strength for resistant restorations
- Tooth-like modulus of elasticity for a shock-absorbing effect and pleasant bite feeling

TOOTH-LIKE BEHAVIOUR

- Blends in extremely well to provide natural aesthetics
- High wear resistance and low abrasion on antagonist

EFFICIENT HANDLING

- No firing process required
- Can be modified and repaired
- Exceptional grinding precision for more freedom of preparation
- Effortless polishing for fast gloss

RELIABLE LUTING SYSTEM

- Secure bonding due to ONE COAT 7 UNIVERSAL
- Suitable luting material for every situation

SIZES

- 12** 12 × 10 × 15 (mm)
- 14** 14 × 12 × 18 (mm)

SHADES

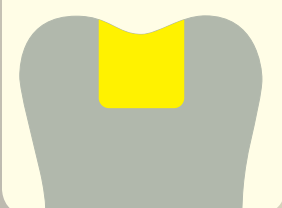
- Low Translucent (LT)**
Bleach, A1, A2, A3, A3.5, B1, B2, B3, C2
- High Translucent (HT)**
A1, A2, A3, B1

INDICATIONS

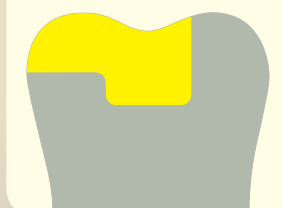
BRILLIANT Crios is the ideal choice for single tooth restorations in the anterior as well as posterior region of teeth. This includes all conventional indications such as **inlays, onlays, crowns and veneers**.



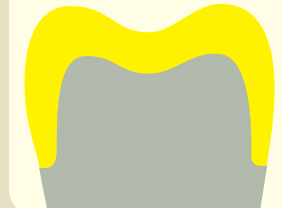
Inlay



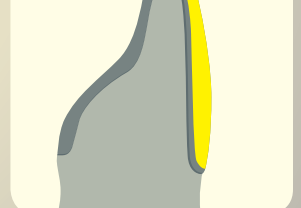
Onlay



Crown



Veneer



REINFORCED COMPOSITE

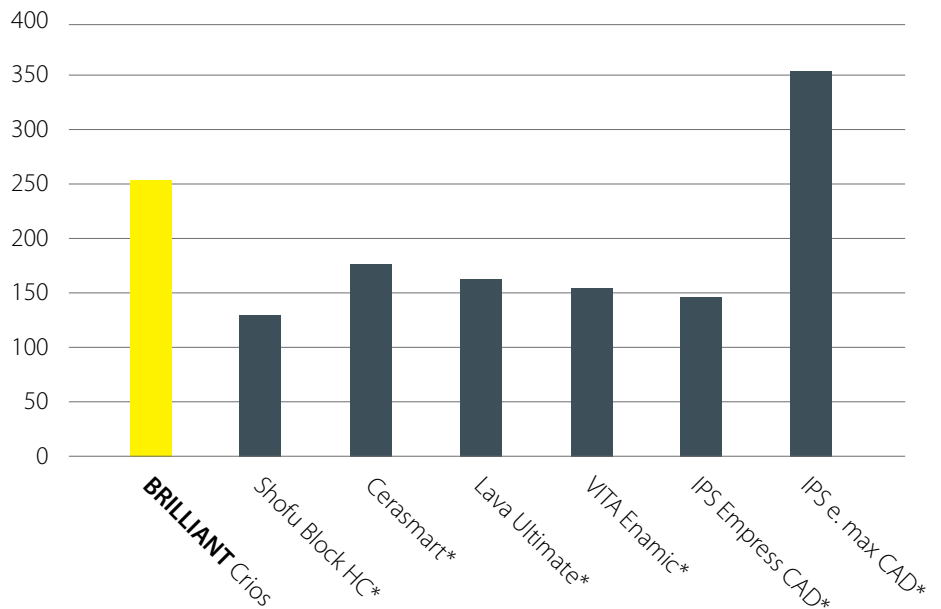
The outstanding mechanical properties of BRILLIANT Crios are the result of controlled, stress-free thermal curing. The multimodal composition of dental glass and amorphous silica in combination with a reinforcing resin matrix make BRILLIANT Crios the ideal material for permanent single tooth restorations.

A STRONG MATERIAL

The quality of BRILLIANT Crios is also reflected by its high flexural strength. The compact structure increases the material resistance and reduces the risk of fracturing.

BIAXIAL FLEXURAL STRENGTH

Measured in MPa



Source: internal data | * not a trademark of COLTENE

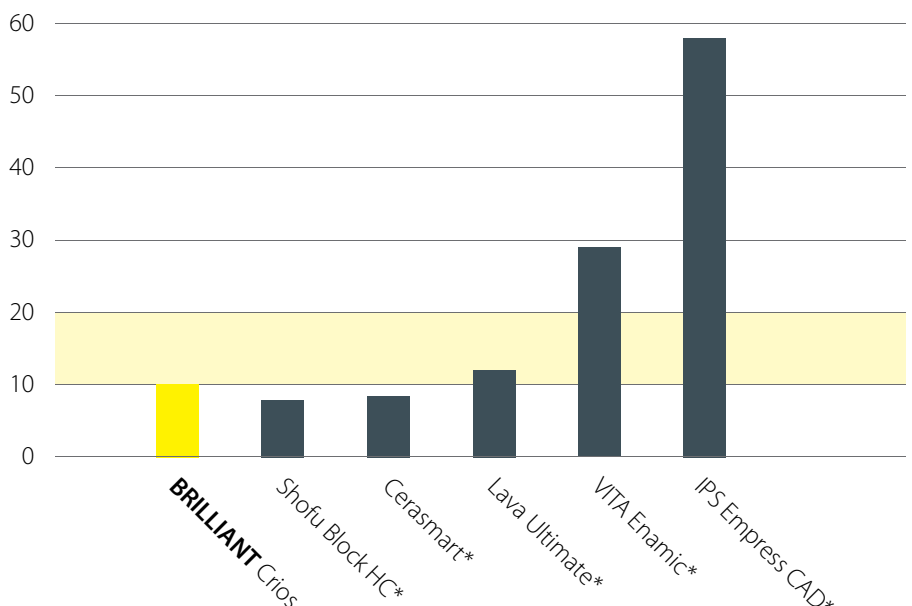
SHOCK-ABSORBING EFFECT

The dentine-like modulus of elasticity of BRILLIANT Crios reduces stress peaks during chewing, resulting in decreased risk of material fatigue. Due to its shock-absorbing effect, it is extremely well suited for implant restorations and provides a pleasant bite feeling. As tooth substance and BRILLIANT Crios have a similar modulus of elasticity, loading stress is considerably reduced at the margins.

MODULUS OF ELASTICITY

Measured in GPa

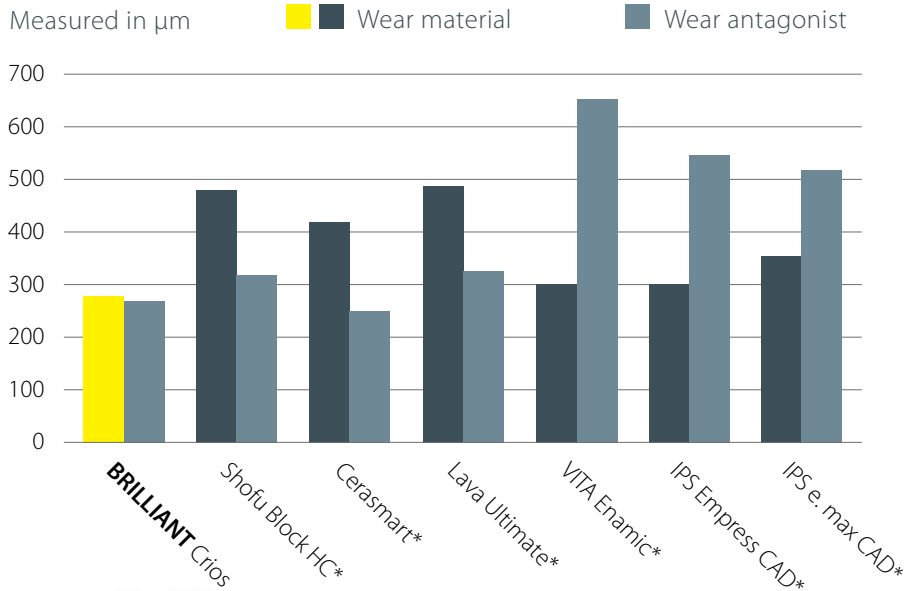
■ Modulus of elasticity of natural dentine



Source: R. Böhner et al., #597, IADR 2015, Antalya, Turkey
* not a trademark of COLTENE

TOOTH-LIKE BEHAVIOUR

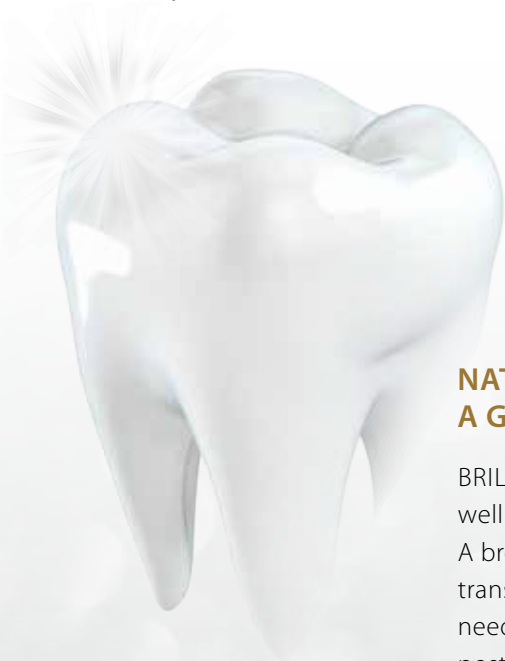
TWO-BODY WEAR



Source: Stawarczyk et al., J Mech Behav Biomed Mater 55, 1-11 (2015) | * not a trademark of COLTENE

WEAR RESISTANT AND GENTLE AT THE SAME TIME

Studies confirm the excellent abrasion resistance of BRILLIANT Crios. Nonetheless, the wear-resistant composite material proves to be especially kind to the antagonist teeth in comparison to ceramic restorations. BRILLIANT Crios is suitable as a permanent restoration material – even under considerable chewing forces – and thus offers the best of both worlds.



NATURAL AESTHETICS WITH A GLOSSY RESULT

BRILLIANT Crios blends in extremely well and conveys natural aesthetics. A broad spectrum of 13 shades in two translucencies perfectly covers the needs in the anterior as well as posterior region of teeth. Immediately after grinding, BRILLIANT Crios displays an extremely homogeneous surface structure. The restoration can therefore be brought to a high gloss very quickly. Easy repolishing, for example during prophylaxis, is possible at any time if required.

EFFICIENT HANDLING



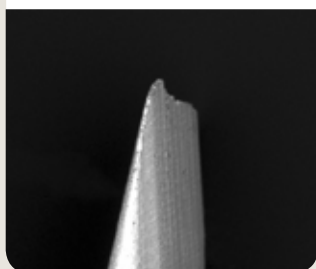
EXCEPTIONAL GRINDING PRECISION

BRILLIANT Crios is distinguished by superior precision. Even when ceramic materials have already start chipping, BRILLIANT Crios can still be ground with ease and precision in the case of extremely thin margins. This exceptional grinding precision offers greater freedom of preparation.

BRILLIANT Crios



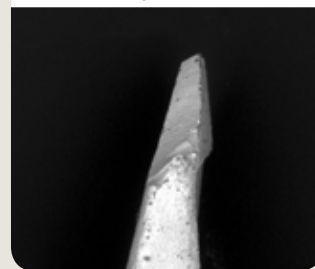
Lava Ultimate*



VITA Enamic*



IPS Empress CAD*



Ground tip 0.1 mm (Sirona inLab MC XL)

Source: C. Kopfmann et al., Eur. J. Prosthodont. Rest. Dent., EMDC Special, P21, 2015, Nuremberg | * not a trademark of COLTENE

TIME AND COST EFFICIENT

- Effortless polishing for fast gloss
- No firing process required
- Quick grinding at high precision
- Easy to modify and repair

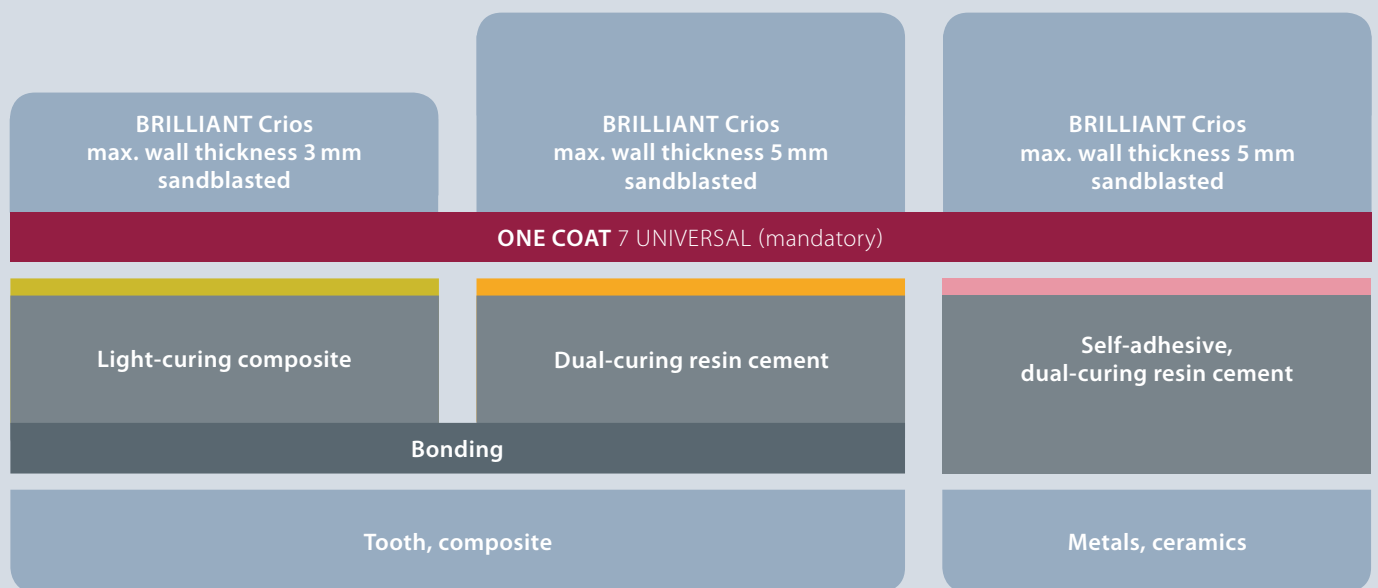
Photo: Dr. Paulo Monteiro



RELIABLE LUTING SYSTEM

As part of its adhesive filling therapy, COLTENE offers a matched and proven luting system for BRILLIANT Crios. The key component of the luting concept is the universal adhesive ONE COAT 7 UNIVERSAL. The smooth BRILLIANT EverGlow composite or the dual-curing resin cements

DuoCem and SoloCem offer indication-appropriate solutions, depending on the wall thickness of the restoration and the luting substrate, ranging from natural dentine to a metal abutment.



BRILLIANT EverGlow™ Light-curing composite	DuoCem® Dual-curing resin cement	SoloCem® Self-adhesive, dual-curing resin cement
Ideal as luting material to dentine or composite for thin restoration walls.	Offers exceptional bonding values to dentine or composite, in particular for greater wall thickness.	Convincing bonding to metal or ceramic abutments, without requiring an additional bonding step.
Wall thickness ≤ 3 mm	Wall thickness ≤ 5 mm	Wall thickness ≤ 5 mm

SECURE BONDING

ONE COAT 7 UNIVERSAL

ONE COAT 7 UNIVERSAL is matched perfectly to the BRILLIANT Crios components, resulting in strong anchorage and a reliable adhesion. This is why the ONE COAT 7 UNIVERSAL adhesive is to be used in conjunction with BRILLIANT Crios.

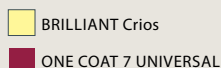
The monomers (red) contained in ONE COAT 7 UNIVERSAL penetrate into the polymerised resin matrix of BRILLIANT Crios



Polymer chains are formed during polymerisation of the monomers and these are anchored in the resin matrix.

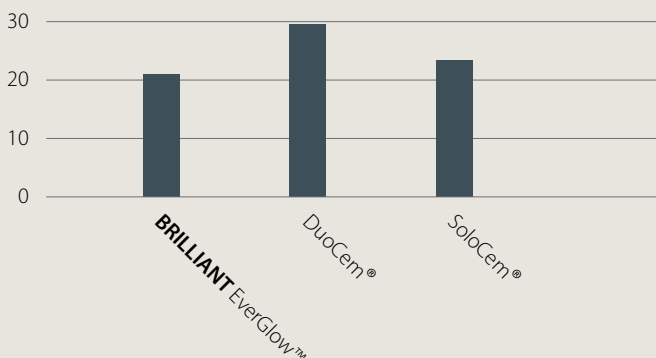


The double bonds contained in the resin matrix form chains during polymerisation of the monomers.



SHEAR BOND STRENGTH WITH ONE COAT 7 UNIVERSAL

Measured in MPa



The BRILLIANT EverGlow, DuoCem and SoloCem luting materials demonstrate excellent bonding strengths to give a secure adhesion to BRILLIANT Crios.

Source: internal data

FURTHER PROPERTIES

ONE COAT 7 UNIVERSAL is a light-curing one component universal adhesive.

- Exceptional bonding values on enamel and dentine
- Excellent marginal seal
- Minimised postoperative sensitivity
- For all application techniques (Self-Etch, Selective Etch, Total Etch)

*Methacryloyl-oxydecyl-dihydrogenphosphat



CLINICAL CASE

Restored teeth

26 with BRILLIANT Crios A2 HT
27 with BRILLIANT Crios A2 LT

Luting

ONE COAT 7 UNIVERSAL
with BRILLIANT EverGlow A2/B2

1. Initial situation



2. Prepare



3. CAD/CAM restoration (27)



4. Sandblasting



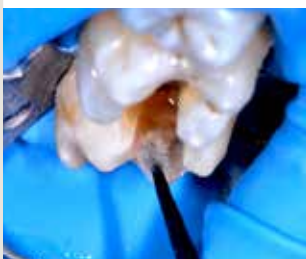
5. Bonding



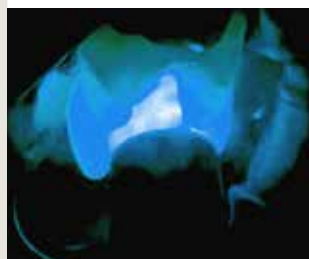
6. Etching



7. Bonding



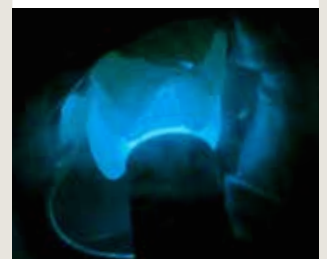
8. Light-curing



9. Luting



10. Light-curing



11. Final result



ORDER INFORMATION

BRILLIANT Crios

6002 0095 Intro Kit CEREC 12

Each 1 × A2 LT 12, A3 LT 12, A3.5 LT 12, A2 HT 12, A3 HT 12
 5 × 0.1 ml ONE COAT 7 UNIVERSAL Single Dose

6002 0097 Intro Kit CEREC 14

Each 1 × A2 LT 14, A3 LT 14, A3.5 LT 14, A2 HT 14, A3 HT 14
 5 × 0.1 ml ONE COAT 7 UNIVERSAL Single Dose



CEREC/inLab – 5 blocs				
	Low Translucent		High Translucent	
	12	14	12	14
Bleach	6001 9998 BL LT 12	6001 9985 BL LT 14		
A1	6001 9999 A1 LT 12	6001 9986 A1 LT 14	6002 0007 A1 HT 12	6001 9994 A1 HT 14
A2	6002 0000 A2 LT 12	6001 9987 A2 LT 14	6002 0008 A2 HT 12	6001 9995 A2 HT 14
A3	6002 0001 A3 LT 12	6001 9988 A3 LT 14	6002 0009 A3 HT 12	6001 9996 A3 HT 14
A3.5	6002 0002 A3.5 LT 12	6001 9989 A3.5 LT 14		
B1	6002 0003 B1 LT 12	6001 9990 B1 LT 14	6002 0010 B1 HT 12	6001 9997 B1 HT 14
B2	6002 0004 B2 LT 12	6001 9991 B2 LT 14		
B3	6002 0005 B3 LT 12	6001 9992 B3 LT 14		
C2	6002 0006 C2 LT 12	6001 9993 C2 LT 14		

ONE COAT 7 UNIVERSAL

6001 9538 ONE COAT 7 UNIVERSAL Intro Kit

1 × 5 ml ONE COAT 7 UNIVERSAL
 1 × 2.5 ml Etchant Gel S
 1 × 20 pcs. Application tips
 1 × 50 pcs. Brushes black
 1 × Mixing well
 1 × Cover for mixing well

6001 9539 ONE COAT 7 UNIVERSAL Refill

1 × 5 ml ONE COAT 7 UNIVERSAL

6001 9540 ONE COAT 7 UNIVERSAL Single Dose

1 × 50 pcs. ONE COAT 7 UNIVERSAL Single Dose
 1 × 50 pcs. Brushes black

7054 ONE COAT 7.0 Activator Kit

1 × 3 ml ONE COAT 7.0 Activator
 1 × 50 pcs. Brushes black

BRILLIANT EverGlow

6001 9720 BRILLIANT EverGlow Trial Kit Syringe

1 × 3 g A2 / B2
 1 × 3 g A3 / D3
 1 × 3 g A3.5 / B3
 1 × 3 g Translucent

6001 9721 BRILLIANT EverGlow Trial Kit Tips

8 × 0.2 g A2 / B2
 8 × 0.2 g A3 / D3
 8 × 0.2 g A3.5 / B3
 8 × 0.2 g Translucent

DuoCem

6001 4381 DuoCem Intro Kit

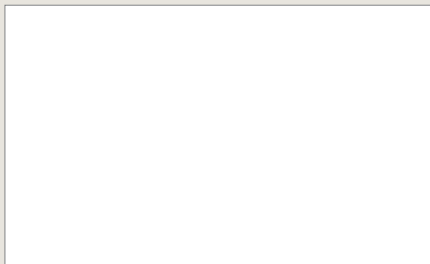
1 × 5 ml DuoCem Dentin
 1 × 5 ml DuoCem Trans
 1 × 10 pcs. Mixing Tip Short Fine
 1 × 10 pcs. Mixing Tip Short Super Fine

SoloCem

6001 3986 SoloCem Intro Kit

1 × 5 ml SoloCem Dentin
 1 × 5 ml SoloCem Trans
 1 × 10 pcs. Mixing Tip Short Fine
 1 × 10 pcs. Mixing Tip Short Super Fine

© 2016 Coltène/Whaledent AG - www.coltene.com



Coltène/Whaledent Ltd.
 The President Suite
 Kendal House, Victoria Way
 Burgess Hill, West Sussex
 RH15 9NF / UK
 Tel +44 1444 235486
 Fax +44 1444 870640
 info.uk@coltene.com

Coltène/Whaledent AG
 Feldwiesenstr. 20
 9450 Altstätten / Switzerland
 T +41 71 757 53 00
 F +41 71 757 53 01
 info.ch@coltene.com

Coltène/Whaledent Inc.
 235 Ascot Parkway
 Cuyahoga Falls, Ohio 44223 / USA
 T +1 330 916 8800
 F +1 330 916 7077
 info.us@coltene.com

