



Trimming of tissue | CeraTip



German utility patent pending GM 20 2007 006 415

Durable instrument made of high-grade ceramics.

Komet has expanded its CeraLine range of innovative white instruments developed by adding the tissue trimmer CeraTip developed in cooperation with Prof. Dr. Sami Sandhaus. The CeraTip is made of a mixed ceramic composed of zircon dioxide partly stabilized by yttrium and aluminium ceramic. This high-performance material lends the CeraTip all the properties the user needs for perfect trimming of the gingiva.

The CeraTip is suited for a vast range of applications in mucosa surgery, a few examples of which are listed on the reverse of this page. It constitutes an ideal alternative to scalpels and electrosurgery.

Manufactured in one piece, the CeraTip offers a range of advantages to the user. Thanks to its ergonomic construction, all fields of gingivectomy can be covered with just one instrument. Unlike many

other trimming instruments, the CeraTip is completely free of metal, which means that there is no metal support that might get in the way or block access to the operative site. Another advantage is the instrument's long service life: There is no glued-in tip that might detach itself from its metal support prematurely.

We provided the CeraTip with a black laser mark so that it stands out more against the mainly white environment in the dental practice.

Advantages at a glance:

- Reduced bleeding because the tip of the instrument causes thermal coagulation sealing the blood vessels
- Durable one-piece construction to prevent premature detachment from a metal support
- Ergonomic construction – with no metal support to get in the way, the CeraTip can cover all indications
- Metal-free, therefore biocompatible and free of corrosion

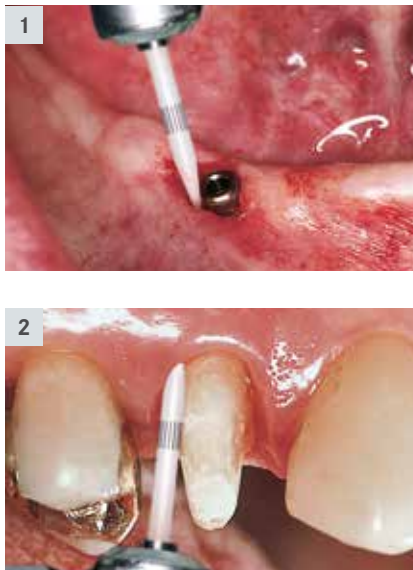
Indications:

The CeraTip is suitable for use in various sectors of mucosa surgery, such as:

- Exposing intra-osseous implant sites (fig. 1)
- Dilation of the sulcus following a crown core preparation (fig. 2)
- Exposing deep cavities in the neck of the tooth
- Exposing impacted teeth
- Papillectomy / Removal of hyperplastic gingiva

Contra-indications

Do not use instrument as a lever and avoid all activities that could lead to jamming of the instrument.



Recommendations for use:

- Work gently in intermittent mode, exerting little pressure. Rotate instrument at an optimum speed of $\text{opt. } 300.000 - 450.000 \text{ rpm}$.
- Use without cooling to allow the tip of the instrument to generate the kind of heat during rotation that is required to cause thermal coagulation, i.e. to model the gingiva with a minimum of bleeding.
- Always clean the instrument with a nylon brush. Metal brushes might leave discoloration caused by friction on the instrument.



KT.314.016



Kit 4561